



Escape the Ordinary





When you step through our doors, you leave the ordinary behind.

Nonstop thrills and unrivaled luxury await you in Southern California's most exhilarating all-in-one destination. Minutes from Los Angeles, we have created an unequalled escape to meet our guests' every desire. Our world-class gaming, lavish spa, open-air pool, and elegant suites ensure that an exceptional experience like no other awaits you. Whether you come to be thrilled at the casino or to recharge at the hotel, your moment is waiting.



ELEGANCE YOU CAN FEEL

FALL INTO YOUR VERY OWN
MAGNIFICENT SANCTUARY.

Giving meticulous attention to every detail, we designed each of our elegant guest rooms to ensure that every part of your stay is superbly satisfying.

Every guest room and executive suite is extraordinarily spacious, providing the private escape you deserve to truly unwind in maximum comfort. With oversized double-queen and king guest rooms, plus even larger standard and one-bedroom suites, our variety of accommodations are designed to meet our guests' every need.

Our ultra-modern California-inspired décor, plush bedding, and extravagant L'Occitane® En Provence bath amenities combine to create a refuge fit for royalty. Whichever comfort or convenience you seek, the first time you arrive at your luxuriantly appointed room, it will be clear that you are destined to enjoy a remarkable experience.



REVITALIZE YOUR SENSES

OUR EXPANSIVE, EXTRAVAGANT HOTEL SPA IS DEDICATED TO YOUR WHOLE WELL-BEING.

Replenish your mind, body, and spirit with an invigorating massage in our therapeutic treatment rooms. Take a moment to soak in one of our soothing baths or take a meditative interlude in our decadent steam rooms. Or relax in our serene lounges which are custom designed private areas for men and women.

Then treat yourself to some well-deserved head-to-toe pampering with a transformational salon experience, from indulgent facials, manicures, and pedicures to nurturing hair treatments and sophisticated styling. Our beauty experts will leave you feeling and looking your most radiant.

OUR ELEVATED POOL RAISES THE BAR

Immerse yourself in the crystal-clear, temperature-controlled waters of our refreshing outdoor pool, offering breathtaking city views.

Reserve your own private cabanas to leisurely lounge as you soak up the warm California sun. After taking a dip in the perfectly welcoming water, stroll up to our poolside cocktail lounge for further refreshment and toast your good fortune. You have arrived.



Everything extraordinary is at your fingertips.

With exhilarating live entertainment, world-class gaming, a sophisticated cocktail lounge, top-notch brewery, state-of-the-art fitness center, airy sundeck with an outdoor bar, a range of unique dining experiences and much more, the heights of exhilaration and relaxation surround you.



WELLNESS & RELAXATION

- Elevated temperature-controlled outdoor pool
- Open sundeck and private cabanas
- Luxuriant wellness Hotel Spa, hair & nail salon, sauna, and treatment rooms
- State-of-the-art fitness center

EXQUISITE DRINKS & DINING

- Sophisticated, spacious Plaza Bar & Lounge
- Bike Brewery, our lively sports bar & grill
- Phoenix Café, featuring innovative Asian cuisine
- Coffee House, serving fresh-brewed coffee & baked goods
- Snack Bar, open 24 hours for quick bites on the go
- In-room dining to cater for your every craving

PROFESSIONAL SERVICES

- Advanced business center with private workrooms
- Multi-purpose meeting rooms
- Expansive, full-service event space for live entertainment
- In-room laundry valet
- Shoe shine service
- Wi-Fi



REVEL IN THE INTENSITY

THE HOTTEST GAME ROOM IN THE COUNTRY
COMES ALIVE.

Play for keeps in one of America's largest and finest poker rooms and enjoy the thrills of our extensive selection of Asian games.

All the electrifying gaming action is matched by our dedication to personal service. Every player, novice or pro, is treated to the ultimate casino experience every time they visit to play.



ALL THE GAMES YOU LOVE

BACCARAT
BLACKJACK
PAI GOW POKER
PAI GOW TILES
CHINESE POKER
THREE CARD POKER
TEXAS HOLD 'EM
SEVEN CARD STUD
OMAHA
MEXICAN POKER
PAN
PAN-9
CRAZY 4 POKER
ULTIMATE TEXAS HOLD 'EM

PLAY ALL NIGHT

ON OUR WORLD-CLASS GAMING FLOOR,
THE ACTION NEVER STOPS.

The energy is electric as you walk onto our 100,000+ square-foot casino. Take your pick from our 175 tables and settle into our remarkably comfortable seats, or come in and enjoy our smoker-friendly Freedom Court atrium. Wherever you play, you'll be surrounded by giant flat-screen TVs, and our hospitable staff will waste no time in catering to your every need.

There's a reason the World Poker Tour, the World Series of Poker, and other world-famous poker tournaments are hosted at The Bicycle Hotel & Casino. We guarantee our guests the highest level of gaming and are experts at delighting all of our players with the best action in Southern California.



SAVOR EVERY TASTE

WHERE EVERY BITE IS A DELIGHT.

Our culinary philosophy holds that every meal should be a uniquely wonderful experience. Our world-class chefs are endlessly inventive, demanding that only the freshest, highest-quality ingredients are prepared with care, sophistication, and delight.

Experience our full range of culinary adventures: Explore the innovative options at **Phoenix Café**, our quick-serve Asian bistro, serving up noodles, soups, rice, entrées, desserts, and assorted exotic teas.

Dive into the pub fare and variety of beers on tap at **Bike Brewery**, our lively sports bar and grill featuring a wide variety of delicious draft and craft beer selections. Open for breakfast, lunch and dinner.

Try the delicious treats from our **Coffee House**, which offers fresh-brewed Starbucks® coffee and a variety of freshly prepared sandwiches, salads and scrumptious desserts baked daily by our team of skilled pastry chefs for your delight.

Drop by the quick-service **Snack Bar** anytime. Open 24 hours, you can get a fresh-made warm bite on the go, plus choose from a delectable selection of fresh-made sandwiches, salads, soft drinks, juices, and draft beer.

Should you prefer to dine in the elegant comfort of your room, we will happily arrange for **room service** to deliver anything you wish directly to your door.



OUR RENOWNED CHEFS CREATE CONSTANTLY EVOLVING MENUS

Pull up a chair at Phoenix Café or Bike Brewery. Grab some fresh fare to go from the Snack Bar or fresh-brewed coffee from the Coffee House. Retreat to the sanctuary of your spacious guest room and enjoy the cuisine of your choice delivered directly to you via our ultra-convenient room service.

We take pride in the power to please any palate. Whether you crave something casual, decadent, contemporary, or exotic, your dining experience will be delectably delightful.

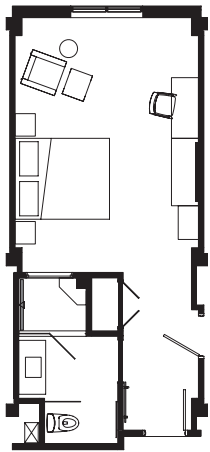


An experience designed to meet your every desire.

With 99 spacious guest rooms and suites providing you a luxurious private sanctuary, plus premium event space for live entertainment and both personal and professional gatherings, we offer everything you need for an unforgettable stay — and more.

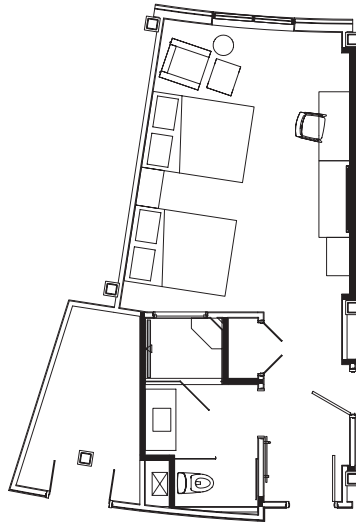
Oversized Standard Rooms

Our sprawling, elegantly appointed Deluxe Queen Queen and King rooms, ranging from 428 to 490 square feet, are designed to make your stay unforgettably pleasurable. Each expansive space boasts exquisitely comfortable beds, personal entertainment centers, ergonomic workstations, sophisticated décor, and inspiring art.



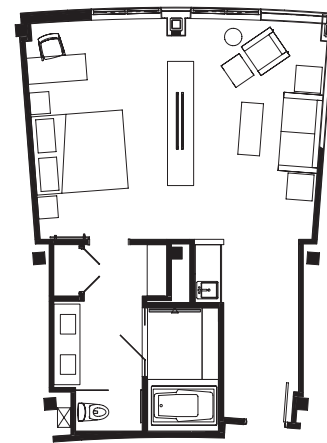
37 - DELUXE KING
(455 SQ. FT.)

1 - DELUXE KING
ACCESSIBLE (428 SQ. FT.)



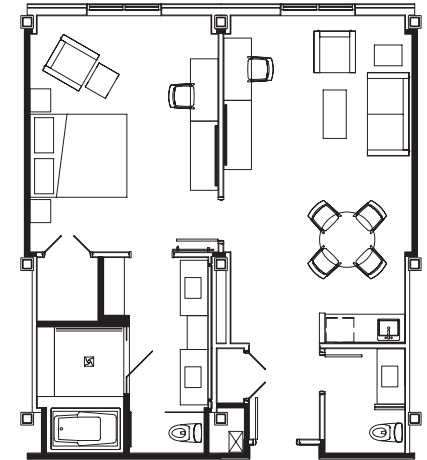
30 - DELUXE QUEEN QUEEN
(455/490 SQ. FT.)

2 - DELUXE QUEEN QUEEN
ACCESSIBLE (455 SQ. FT.)



18 - CLASSIC SUITE
(648 SQ. FT.)

1 - CLASSIC SUITE
ACCESSIBLE (648 SQ. FT.)



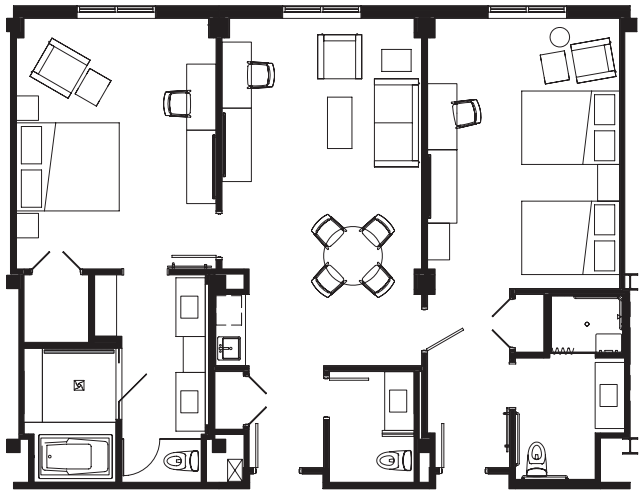
7 - THE BIKE SUITE
(904 SQ. FT.)

1 - THE BIKE SUITE
ACCESSIBLE (904 SQ. FT.)

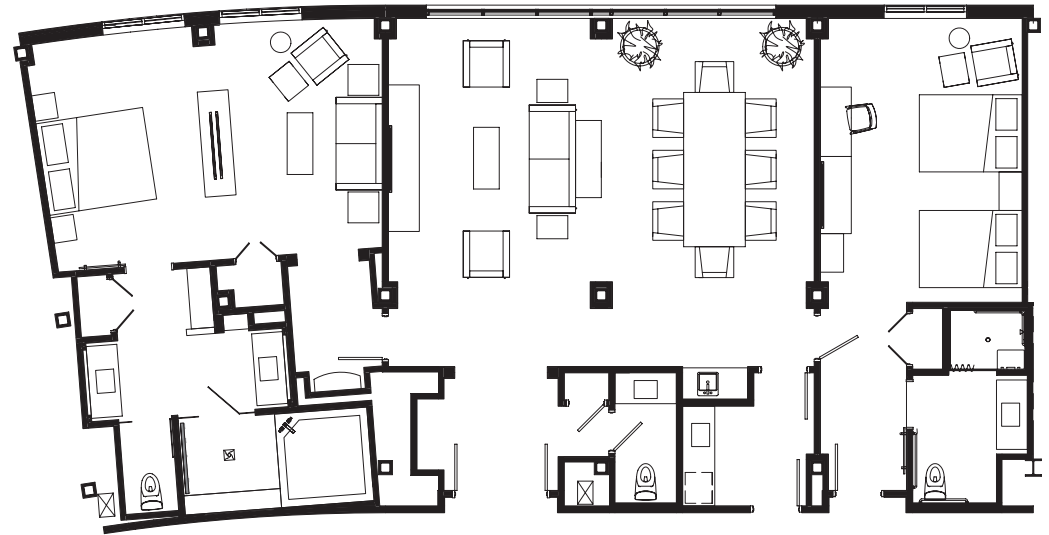
OUR GENEROUS FLOOR PLANS TO SUIT ANY STYLE

Spectacular Suites

For even more lavish space to unwind and recharge, our generous suites, ranging from 648 to over 2,000 square feet, offer the ultimate private sanctuary during your stay. Every design accent has been attentively crafted, and every furnishing contributes to an undeniable feeling of elegance. For our highly discerning guests, our Governor's Suite (1,359 square feet) and our Presidential Suite (2,007 square feet) provide the pinnacle of luxury, including personal concierge service available throughout your stay.



1 - GOVERNOR'S SUITE (1,359 SQ. FT.)



1 - PRESIDENTIAL SUITE (2,007 SQ. FT.)

MEETING AND EVENT SPACE FOR ANY OCCASION

Our fully functional private event rooms provide over 7,754 square feet of multipurpose space for live entertainment, conferences, banquets, and other gatherings. Perfect for both professional and personal occasions, these chic, stylish meeting spaces feature everything you and your attendees need to enjoy a wonderfully successful event.





the Bicycle
HOTEL CASINO

the Bicycle
HOTEL CASINO

BICYCLE CASINO

THE BICYCLE
HOTEL CASINO



888 Bicycle Casino Drive Bell Gardens, CA 90201 | (562) 806-4646 | THEBIKE.COM

The images shown here are not actual photographs of The Bicycle Hotel & Casino. Stock imagery is used for visual inspiration only. This brochure is intended as a pre-opening internal communication tool that aids with visual conceptualization of the finished property. The Bicycle Hotel & Casino is scheduled to open in Fall 2015.